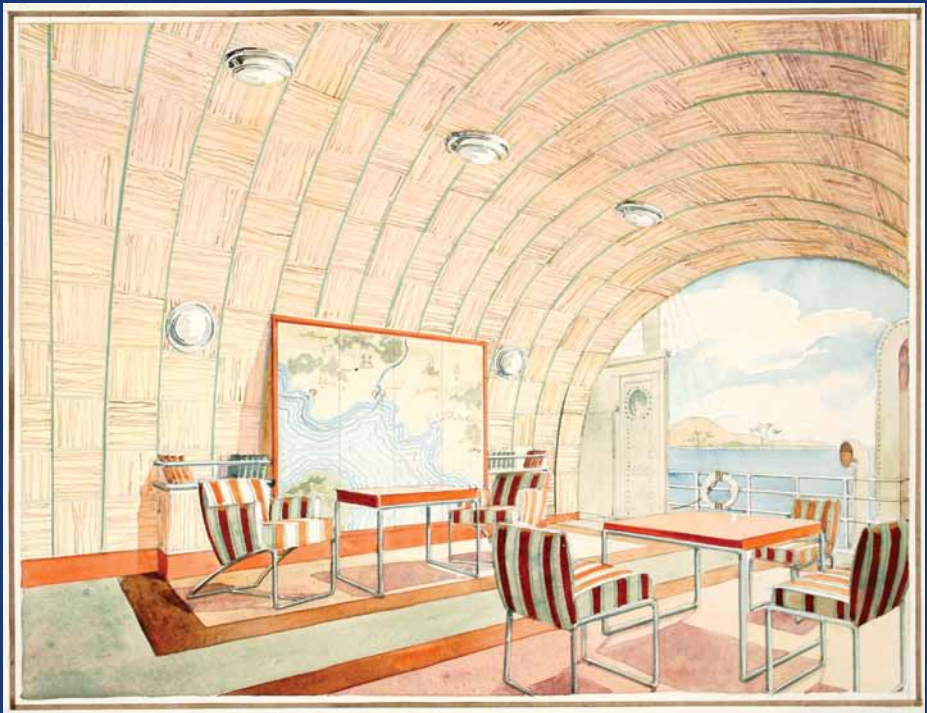


# URSUS PRINTS

*Fine antique decorative prints, watercolors, and gouaches*

WWW.URSUSPRINTS.COM

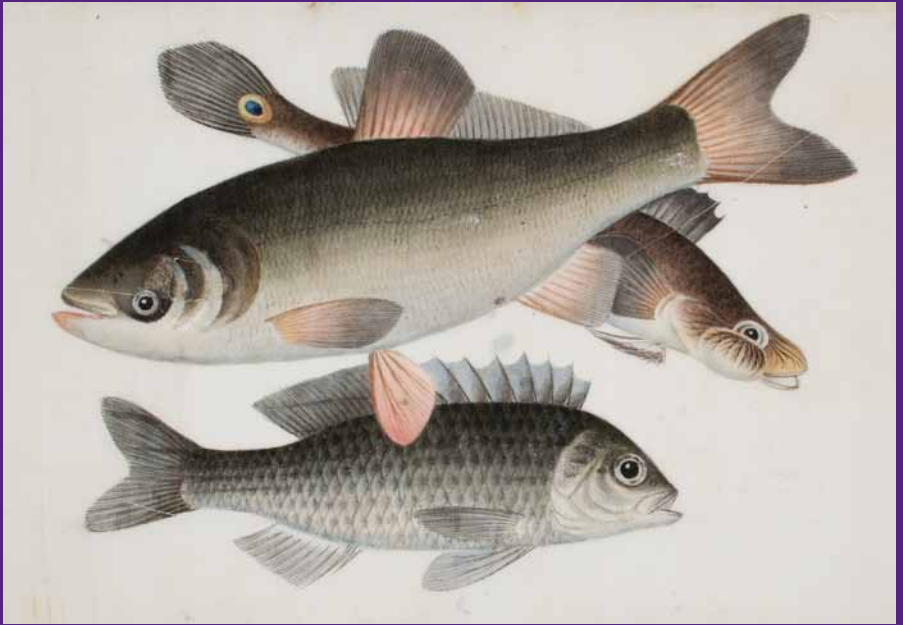


*La Salle de Jeux. Paris, ca. 1925. Original watercolor on Bristol board.*



Ursus Books and Prints Ltd.  
699 Madison Avenue · New York, NY 10065  
prints@ursusbooks.com · 212-772-8787

# CHINESE AND JAPANESE PRINTS AND GOUACHES



Chinese Export School. *[Fish]*. Gouache on pith paper, circa 1815–1820.

(#123877)



Kuniyasu, Utagawa (1794–1832). *[Three Geisha]*. Ca. 1817–1830. Three-panel woodblock print.

(#156403)



Yo-ce-qua (Youqua?). *[Portrait of the Emperor]*. Original gouache on pith paper, ca. 1850. (#111958)



# ART DECO POCHOIR



Delaunay, Sonia. *Pl. 3* from *Ses Peintures, Ses Objets, Ses Tissus Simultanés, Ses Modes*. Paris, Librairie des Arts Decoratifs, ca. 1925. (#126842)



Delacroix, Henri. 29. *Hall* from *Décoration moderne dans l'intérieur*. Pochoir. Paris, ca. 1930. (#150178)

# TWENTIETH-CENTURY FASHION



Borelli-Vranska, Z. de. [*Bracelet & Fan Design*] from *Le dessus du panier* by M. Jean-Meyan. Paris, 1914. Pochoir. (#150434)



Gruau, René. [*Balenciaga design*]. Paris, 1952. Chromolithograph. (#153500)



Pl. 29. New York, Edyth Sparag Studios, ca. late 1930s. Mimeograph with pencil, hand-colored with gouache. (#155914)



Joumard, G.P. *Créations Jean Latour, Minuetto* from *Trés Parisien*. Paris, 1928. Pochoir. (#156719)

# BOTANICAL PRINTS AND WATERCOLORS



Thornton, Dr. Robert. *The Sacred Egyptian Bean*. London, 1799–1807. Mixed media engraving with hand-coloring. (#128450)



Freberg, Jack. *Tigerlily*. 1988. Original watercolor on board. (#16778)



Linden, Jean Jules. *Lindenia iconographie des Orchidées: Cattleya*. Brussels, 1860. Original chromolithograph. (#151031)

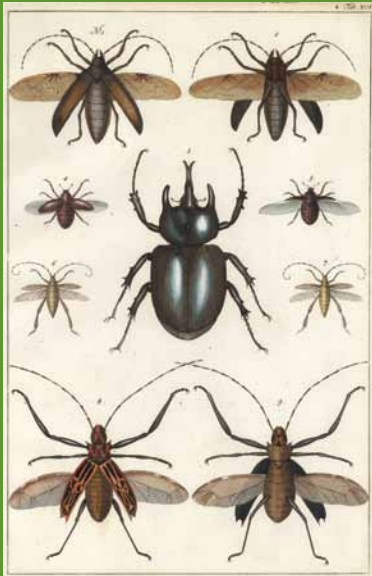


Brookshaw, George. *LXIX [White Candia]*. London, 1804–12. Aquatint with stipple engraving, color printed and hand-colored. (#126051)

## NATURAL HISTORY



Audubon, John James. *CCXXI, Mallard Duck from The Birds of America*. Amsterdam Edition, 1971–73. Original multicolor offset print. (#153897)



Seba, Albertus. *Tab. XCI*. from *Cabinet of Natural Curiosities*. Amsterdam, 1734–65. Original engraving with later hand-coloring. (#111495)



Gould, John. *Ramphastos Citreolaemus* from *A Monograph of the Family of Toucans*. London, 1833–1835. Lithograph hand-colored at publication. (#111503)



# ORIGINAL WATERCOLORS AND GOUACHES



Neapolitan School. *Castellammare*. Original gouache on paper, ca. 1840. (#126910)



Pair of original late 19th-century wallpaper pieces (sconce designs). Gouache with gold leaf embellishment. (#139927)



Knotek, Libuse. *Chow Chow*. Original watercolor and pencil drawing. Czech Republic, ca. 1993. (#149940)



*Hanson Lettuce*. Ca. 1930–40. Painted as an illustration for commercial seed packets for the Stern-Traug Lithograph Corporation, Rochester, NY. (#149978)



Romano, Ludovico Tronti. *Gli Stemmi Gentilizi della Nobilita Romana [The Aristocratic Coats of Arms of the Roman Nobility]*. This crest: *Savelli*. Original gouache with gilding and manuscript, 1868. (#134663)